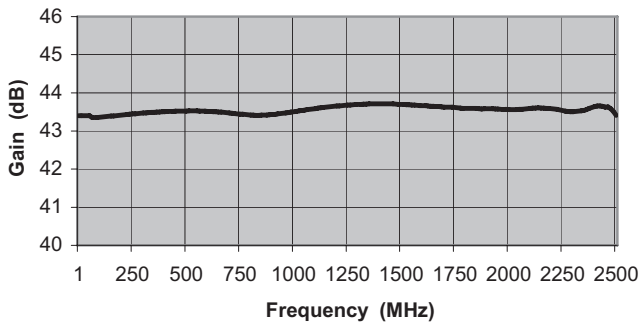


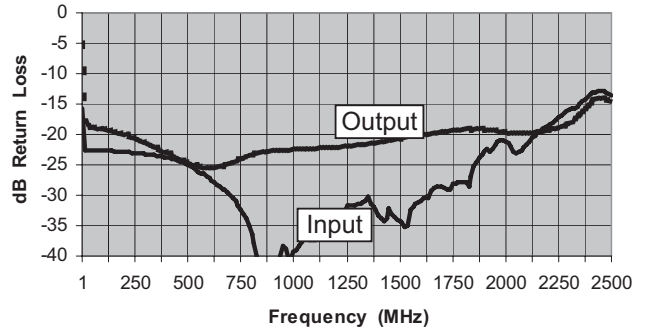
MITEQ AM-1622 AMPLIFIER

FREQUENCY (MHz)	MODEL NUMBER	GAIN (dB) (Min.)	VAR. (\pm dB) (Max.)	VSWR (Max.)	IMPED. IN/OUT (Ohms)	NOISE FIGURE (dB, Typ.)	P1 dB (dBm) (Typ.)	VOLTS	NOM. DC POWER (mA)	OUTLINE NO.
5-1000	AM-1622-1000	41	0.75	2.0:1	50/50	3.1	17	15	130	2
5-2000	AM-1622-2000	41	0.75	2.0:1	50/50	3.3	17	15	130	2
5-2500	AM-1622-2500	41	1	2.0:1	50/50	3.4	16	15	130	2

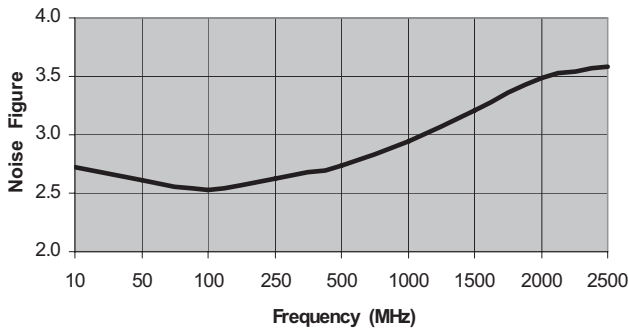
Gain



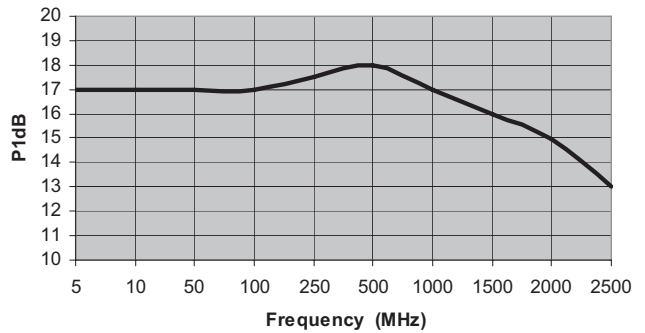
Input & Output Return Loss (dBRL)



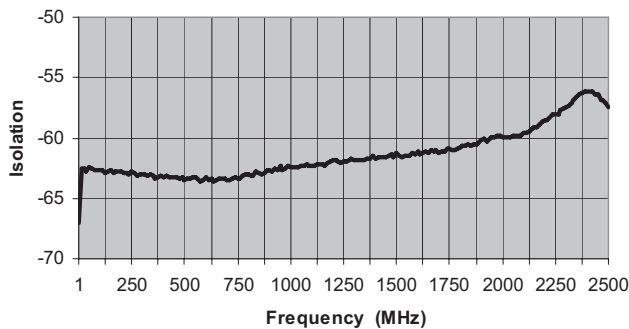
Noise Figure (dB)



Output -1dB Gain Compression (+dBm)



Reverse Isolation (dB)



ISO 9001:2000 Certified • General Information • Warranty



100 Davids Drive, Hauppauge, NY 11788
 TEL.: (631) 439-9220 • FAX: (631) 436-7430
 e-mail: components@miteq.com • www.miteq.com

MITEQ AM-1622 AMPLIFIER

Freq. (MHz)	Gain (dB)
1	43.4
13	43.4
26	43.4
38	43.4
51	43.4
63	43.4
76	43.4
88	43.4
101	43.4
113	43.4
126	43.4
138	43.4
151	43.4
163	43.4
176	43.4
188	43.4
201	43.4
213	43.4
226	43.4
238	43.4
250	43.4
263	43.5
276	43.5
288	43.5
301	43.5
313	43.5
326	43.5
338	43.5
351	43.5
363	43.5
376	43.5
388	43.5
401	43.5
413	43.5
426	43.5
438	43.5
451	43.5
463	43.5
476	43.5
488	43.5
500	43.5
513	43.5
526	43.5
538	43.5
551	43.5
563	43.5
576	43.5
588	43.5
601	43.5
613	43.5
626	43.5
638	43.5
651	43.5
663	43.5
676	43.5
688	43.5
701	43.5
713	43.5
726	43.5
738	43.5
750	43.4
763	43.4
776	43.4
788	43.4

Freq. (MHz)	Gain (dB)
801	43.4
813	43.4
826	43.4
838	43.4
851	43.4
863	43.4
876	43.4
888	43.4
901	43.4
913	43.4
926	43.4
938	43.5
951	43.5
963	43.5
976	43.5
988	43.5
1000	43.5
1013	43.5
1026	43.5
1038	43.5
1051	43.5
1063	43.6
1076	43.6
1088	43.6
1101	43.6
1113	43.6
1126	43.6
1138	43.6
1151	43.6
1163	43.6
1176	43.6
1188	43.6
1201	43.7
1213	43.7
1226	43.7
1238	43.7
1250	43.7
1263	43.7
1275	43.7
1288	43.7
1300	43.7
1313	43.7
1325	43.7
1338	43.7
1350	43.7
1363	43.7
1375	43.7
1388	43.7
1400	43.7
1413	43.7
1425	43.7
1438	43.7
1450	43.7
1463	43.7
1475	43.7
1488	43.7
1500	43.7
1513	43.7
1525	43.7
1538	43.7
1550	43.7
1563	43.7
1575	43.7
1588	43.7

Freq. (MHz)	Gain (dB)
1600	43.7
1613	43.7
1625	43.7
1638	43.7
1650	43.6
1663	43.6
1675	43.6
1688	43.6
1700	43.6
1713	43.6
1725	43.6
1738	43.6
1750	43.6
1763	43.6
1775	43.6
1788	43.6
1800	43.6
1813	43.6
1825	43.6
1838	43.6
1850	43.6
1863	43.6
1875	43.6
1888	43.6
1900	43.6
1913	43.6
1925	43.6
1938	43.6
1950	43.6
1963	43.6
1975	43.6
1988	43.6
2000	43.6
2013	43.6
2025	43.6
2038	43.6
2050	43.6
2063	43.6
2075	43.6
2088	43.6
2100	43.6
2113	43.6
2125	43.6
2138	43.6
2150	43.6
2163	43.6
2175	43.6
2188	43.6
2200	43.6
2213	43.6
2225	43.6
2238	43.6
2250	43.5
2263	43.5
2275	43.5
2288	43.5
2300	43.5
2313	43.5
2325	43.5
2338	43.5
2350	43.5
2363	43.6
2375	43.6
2388	43.6

Freq. (MHz)	Gain (dB)
2400	43.6
2413	43.7
2425	43.7
2438	43.6
2450	43.6
2463	43.6
2475	43.6
2488	43.5
2500	43.4



100 Davids Drive, Hauppauge, NY 11788
 TEL.: (631) 439-9220 • FAX: (631) 436-7430
 e-mail: components@miteq.com • www.miteq.com

MITEQ AM-1622 AMPLIFIER

Freq. (MHz)	Input VSWR (dBRL)	Output VSWR (dBRL)
1	-20	-15
13	-23	-18
26	-23	-19
38	-23	-19
51	-23	-19
63	-23	-19
76	-23	-19
88	-23	-19
101	-23	-19
113	-23	-19
126	-23	-19
138	-23	-19
151	-23	-19
163	-23	-20
176	-23	-20
188	-23	-20
201	-23	-20
213	-23	-20
226	-23	-20
238	-23	-20
250	-23	-21
263	-23	-21
276	-23	-21
288	-23	-21
301	-23	-21
313	-23	-21
326	-23	-22
338	-23	-22
351	-23	-22
363	-24	-22
376	-24	-23
388	-24	-23
401	-24	-23
413	-24	-23
426	-24	-23
438	-24	-24
451	-24	-24
463	-24	-24
476	-24	-24
488	-25	-24
500	-25	-25
513	-25	-25
526	-26	-25
538	-26	-25
551	-26	-25
563	-26	-25
576	-27	-25
588	-27	-25
601	-27	-25
613	-28	-25
626	-28	-25
638	-28	-25
651	-29	-25
663	-29	-25
676	-29	-25
688	-29	-25
701	-30	-25
713	-30	-25
726	-31	-24
738	-32	-24
750	-32	-24
763	-33	-24
776	-34	-24

Freq. (MHz)	Input VSWR (dBRL)	Output VSWR (dBRL)
788	-35	-23
801	-36	-23
813	-38	-23
826	-40	-23
838	-43	-23
851	-46	-23
863	-43	-23
876	-54	-23
888	-56	-23
901	-48	-23
913	-44	-23
926	-42	-23
938	-40	-23
951	-38	-23
963	-39	-23
976	-41	-23
988	-40	-22
1000	-39	-22
1013	-39	-22
1026	-38	-22
1038	-38	-22
1051	-36	-22
1063	-36	-22
1076	-37	-22
1088	-37	-22
1101	-37	-22
1113	-37	-22
1126	-37	-22
1138	-36	-22
1151	-34	-22
1163	-34	-22
1176	-33	-22
1188	-33	-22
1201	-33	-22
1213	-33	-22
1226	-33	-22
1238	-33	-22
1250	-32	-22
1263	-32	-22
1275	-32	-22
1288	-32	-22
1300	-32	-22
1313	-31	-22
1325	-31	-22
1338	-31	-22
1350	-30	-22
1363	-31	-21
1375	-32	-21
1388	-32	-21
1400	-33	-21
1413	-34	-21
1425	-34	-21
1438	-34	-21
1450	-32	-21
1463	-33	-21
1475	-34	-21
1488	-34	-21
1500	-34	-21
1513	-35	-21
1525	-35	-20
1538	-35	-20
1550	-32	-20
1563	-32	-20

Freq. (MHz)	Input VSWR (dBRL)	Output VSWR (dBRL)
1575	-32	-20
1588	-31	-20
1600	-31	-20
1613	-31	-20
1625	-30	-20
1638	-30	-20
1650	-29	-20
1663	-29	-20
1675	-29	-20
1688	-28	-20
1700	-29	-20
1713	-29	-19
1725	-29	-19
1738	-29	-19
1750	-28	-19
1763	-28	-19
1775	-28	-19
1788	-28	-19
1800	-28	-19
1813	-28	-19
1825	-29	-19
1838	-27	-19
1850	-25	-19
1863	-24	-19
1875	-24	-19
1888	-23	-19
1900	-23	-19
1913	-22	-19
1925	-23	-19
1938	-22	-19
1950	-22	-19
1963	-21	-19
1975	-21	-19
1988	-21	-19
2000	-21	-20
2013	-21	-20
2025	-22	-20
2038	-23	-20
2050	-23	-20
2063	-23	-20
2075	-23	-20
2088	-22	-20
2100	-22	-20
2113	-21	-20
2125	-21	-20
2138	-20	-20
2150	-20	-20
2163	-19	-20
2175	-19	-19
2188	-19	-19
2200	-19	-19
2213	-18	-19
2225	-18	-19
2238	-18	-19
2250	-17	-19
2263	-17	-19
2275	-16	-19
2288	-16	-18
2300	-16	-18
2313	-16	-18
2325	-16	-17
2338	-15	-17
2350	-15	-17

Freq. (MHz)	Input VSWR (dBRL)	Output VSWR (dBRL)
2363	-15	-16
2375	-14	-16
2388	-14	-15
2400	-13	-15
2413	-13	-14
2425	-13	-14
2438	-13	-14
2450	-13	-14
2463	-13	-14
2475	-13	-14
2488	-13	-14
2500	-13	-14



100 Davids Drive, Hauppauge, NY 11788
 TEL.: (631) 439-9220 • FAX: (631) 436-7430
 e-mail: components@miteq.com • www.miteq.com

MITEQ AM-1622 AMPLIFIER

Freq. (MHz)	Reverse Isolation (dB)
1	-67
13	-63
26	-63
38	-63
51	-62
63	-63
76	-63
88	-63
101	-63
113	-63
126	-63
138	-63
151	-63
163	-63
176	-63
188	-63
201	-63
213	-63
226	-63
238	-63
250	-63
263	-63
276	-63
288	-63
301	-63
313	-63
326	-63
338	-63
351	-63
363	-63
376	-63
388	-63
401	-63
413	-63
426	-63
438	-63
451	-63
463	-63
476	-63
488	-63
500	-63
513	-63
526	-63
538	-63
551	-63
563	-63
576	-64
588	-63
601	-63
613	-64
626	-63
638	-64
651	-64
663	-63
676	-63
688	-63
701	-63
713	-63
726	-63
738	-63
750	-63
763	-63
776	-63

Freq. (MHz)	Reverse Isolation (dB)
788	-63
801	-63
813	-63
826	-63
838	-63
851	-63
863	-63
876	-63
888	-63
901	-63
913	-63
926	-63
938	-63
951	-62
963	-63
976	-63
988	-62
1000	-62
1013	-62
1026	-62
1038	-62
1051	-62
1063	-62
1076	-62
1088	-62
1101	-62
1113	-62
1126	-62
1138	-62
1151	-62
1163	-62
1176	-62
1188	-62
1201	-62
1213	-62
1226	-62
1238	-62
1250	-62
1263	-62
1275	-62
1288	-62
1300	-62
1313	-62
1325	-62
1338	-62
1350	-62
1363	-62
1375	-62
1388	-61
1400	-62
1413	-62
1425	-62
1438	-62
1450	-62
1463	-61
1475	-61
1488	-62
1500	-61
1513	-61
1525	-62
1538	-61
1550	-61
1563	-61

Freq. (MHz)	Reverse Isolation (dB)
1575	-61
1588	-61
1600	-61
1613	-61
1625	-61
1638	-61
1650	-61
1663	-61
1675	-61
1688	-61
1700	-61
1713	-61
1725	-61
1738	-61
1750	-61
1763	-61
1775	-61
1788	-61
1800	-61
1813	-61
1825	-61
1838	-61
1850	-61
1863	-61
1875	-61
1888	-60
1900	-60
1913	-60
1925	-60
1938	-60
1950	-60
1963	-60
1975	-60
1988	-60
2000	-60
2013	-60
2025	-60
2038	-60
2050	-60
2063	-60
2075	-60
2088	-60
2100	-60
2113	-60
2125	-59
2138	-59
2150	-59
2163	-59
2175	-59
2188	-59
2200	-59
2213	-59
2225	-58
2238	-58
2250	-58
2263	-58
2275	-58
2288	-58
2300	-57
2313	-57
2325	-57
2338	-57
2350	-57

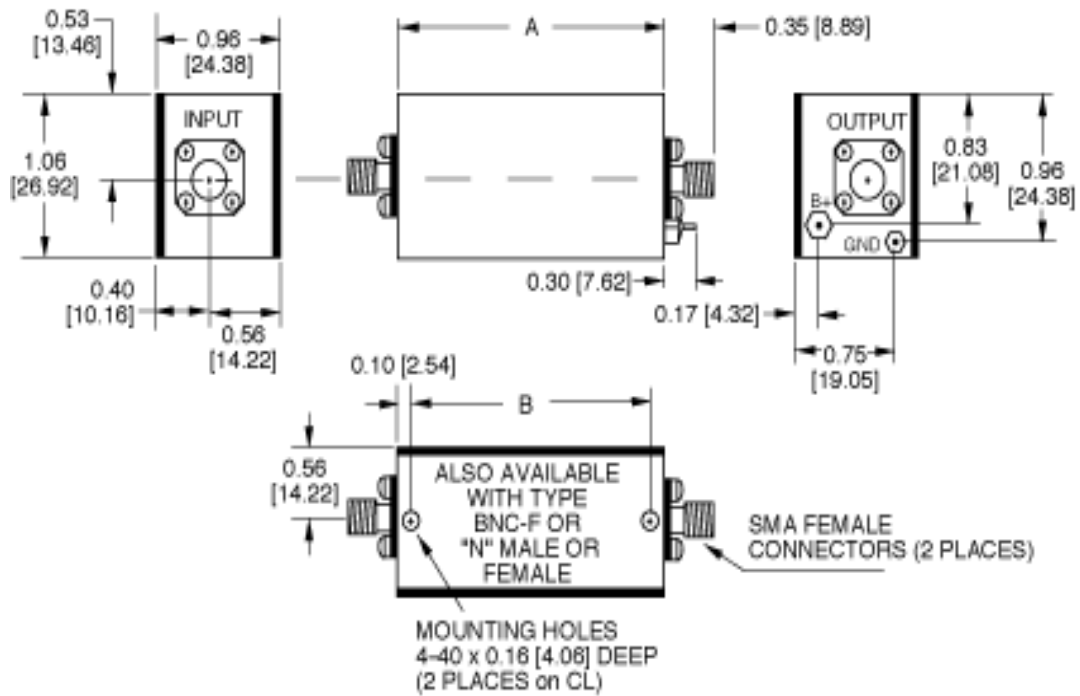
Freq. (MHz)	Reverse Isolation (dB)
2363	-56
2375	-56
2388	-56
2400	-56
2413	-56
2425	-56
2438	-56
2450	-56
2463	-57
2475	-57
2488	-57
2500	-58



100 Davids Drive, Hauppauge, NY 11788
 TEL.: (631) 439-9220 • FAX: (631) 436-7430
 e-mail: components@miteq.com • www.miteq.com

MITEQ AM-1622 AMPLIFIER

OUTLINE	DIM A	DIM B	OUNCES
2	1.92 [48.77]	1.72 [43.69]	2.2



NOTE: DIMENSIONS ARE IN INCHES [MILLIMETERS].



100 Davids Drive, Hauppauge, NY 11788
 TEL.: (631) 439-9220 • FAX: (631) 436-7430
 e-mail: components@miteq.com • www.miteq.com

OPTIONS FOR BIPOLAR AMPLIFIERS

INPUT BIAS TEE

Add Suffix "-F"

Used to inject bias signal to photo diode or other type of device. Check for availability on your model before ordering. Available on most units operating above 1 MHz. Please contact MITEQ with your custom requirements.

BIAS THROUGH THE OUTPUT CONNECTOR

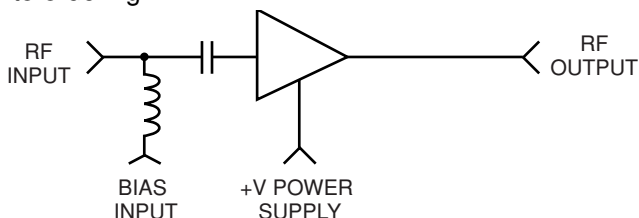
Add Suffix "-1306/E" or "-1306/D"

Used to supply operating power when the amplifier is remotely located while eliminating the need to run a separate DC line. Specify whether existing power pin should be "Enabled" or "Disabled." To order, add -1306/E or -1306/D after model number. Example: AU-2A-0150-1306/E will have existing +15 V pin enabled so that it can be used as a test point. Use caution with this option since any voltage applied here will also be present on the RF output center pin. Available on most units operating above 1 MHz.

BIAS THROUGH THE OUTPUT CONNECTOR WITH DC FEEDTHROUGH TO RF INPUT

Add Suffix "-1334/E" or "-1334/D"

Used to supply operating power when the amplifier is remotely located and eliminates the need to run a separate DC line. This DC voltage is then internally fed to the RF input to power a remote LNA or other low power equipment. Maximum current of external load will vary with model type. Available on most units operating above 1 MHz. Please contact factory prior to ordering.



Specify whether existing power pin should be "Enabled" or "Disabled". To order, add "-1334/E" or "-1334/D"

after model number. Example: AU-2A-0150-1334/E will have existing +15 V pin enabled so that it can be used as a test point. Use caution with this option since any voltage applied here will also be present on both the RF output and input center pins.

TYPE N OR BNC CONNECTORS

Add Suffix "-N" or "-BNC"

Type N-female and type BNC-female are available for all outlines 1 through 5, 12, 13 and 15 amplifiers. Add connector type after model number. Examples: AU-2A-0150-N; AU-2A-0150-BNC. Type N-male and mixed connector types are also available on request. Please call MITEQ with your specific requirements.

INPUT INTERNAL LIMITER

Add Suffix "-1103"

Available on models up to 500 MHz. Will protect the input stage from CW signals as high as +30 dBm. To order, add "-1103" after model number. Example: AU-2A-0150-1103. Options are available for protection against short duration pulses up to 50 W.

AC POWER SUPPLY (100 to 240 VAC, 47 - 440 Hz). Add Suffix "-1179"

Available as an add-on to most models using outlines 1 through 5 and 15. Includes 6-foot line cord with standard US line plug, internal fuse, on/off switch and LED indicator light. Amplifier is permanently mounted to power supply. To order, add "-1179" after model number. Example: AU-2A-0150-1179. Refer to outline 12 for dimensions.

AC POWER SUPPLY (Wall plug-in unit) Part Number "205531-19"

A low cost alternate to option "-1179", the wall plug-in unit is a small switching power supply capable of delivering 1 amp at 15 volts.

AC POWER SUPPLY WITH SMC CONNECTORS (Wall plug-in unit) Part Number "-1179SC"

Same as above except has mating SMC connectors on amplifier DC input and power supply DC output. Available for outlines 1 through 10, 13 and 15.

ADDITIONAL OPTIONS AVAILABLE

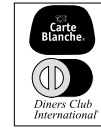
OPTION	SUFFIX
Gain Window	-GW
Phase Match	-PM
Amplitude Match	-AM
Gain Control	-GC



GENERAL INFORMATION

PRICING AND TERMS

A quotation on any item in the catalog is available by contacting the factory. All quotations, unless otherwise noted, are valid for 60 days from the date of issue, F.O.B. (FCA) Hauppauge, NY 11788. Pricing does not include customer or government source inspection unless otherwise noted. On international orders, an irrevocable letter of credit may be required. MITEQ accepts these credit cards:



QUANTITY DISCOUNTS

A quantity discount is generally available on most catalog items. Due to the wide variety of devices in the catalog, it is not possible to provide a standard discount schedule. When quantities are involved, please contact the factory and the appropriate information will be provided.

SOURCE INSPECTION

Government / customer source inspection is available on any item upon receipt of the complete written confirmation of purchase order items, including the prime government contract number. Source inspection with respect to some products increases the unit price and extends delivery because of duplicate standard final inspection and testing. It is recommended wherever possible that a Certificate of Compliance be substituted for source inspection to minimize price and delivery delays.

SHIPPING INFORMATION

Unless instructed otherwise by the customer, we will ship UPS in the U.S. F.O.B. (FCA) Hauppauge. Air freight will be used as the primary international means of shipment. Please indicate at time of purchase what method of shipment you require.

RETURNED MATERIAL

When returning material for repair or replacement, please ensure that there is complete information included with the shipment, giving a detailed description of the reason for its return, the date and purchase order on which it was obtained, and the exact address to which the material is to be reshipped. All returns must arrive freight, postage, duties and handling prepaid.

REPAIR COSTS

Warranty repairs will be made at no cost to the customer. Units out of warranty, or those which have been mishandled, will require approval by the customer for the charges involved before the repairs can be accomplished. We will provide an estimate for the cost of the repair, which can be applied to the repair, if approval is granted. For those items that are deemed beyond repair, or where the customer may decide not to repair the unit, an evaluation fee and handling charge will be applicable.

APPLICATION ENGINEERING

We maintain a large support staff of engineers who are experts in specific areas of microwave technology. Each has an engineering background that combines both a formal engineering education with training and experience in product design. As further technical support, we make available the services of our engineering and scientific staff, who may be consulted on more advanced circuit designs or application problems.

DRAWINGS AND SPECIFICATIONS

The material presented in this catalog was current at the time of publication. MITEQ Inc.'s continuing product improvement program makes it necessary to reserve the right to change our mechanical and electrical specifications without notice. If either of these parameters is critical, please contact the factory to verify that the information is current.

ADDITIONAL INFORMATION

WARRANTY

ISO 9001:2000 Certified



MITEQ FEDERAL SUPPLY CODE

Our Federal Supply Code is: 33592



100 Davids Drive, Hauppauge, NY 11788
TEL.: (631) 439-9220 • FAX: (631) 436-7430
e-mail: components@miteq.com • www.miteq.com